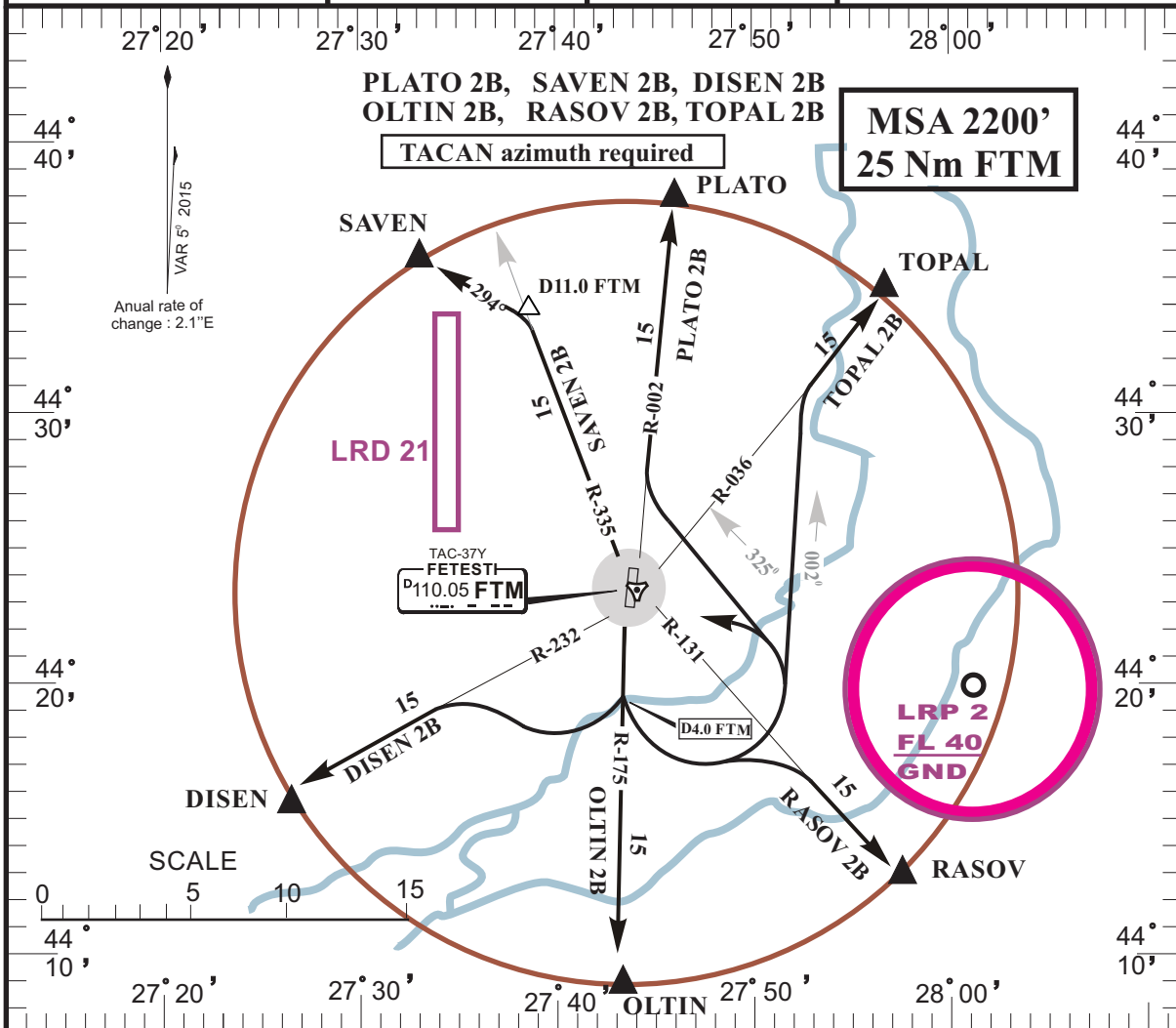


LRFT/FTM
BORCEA-FETESTI

FETEȘTI, ROMANIA
SID RWY 18

<i>RUBIN INFO</i> 130.800 /240.600ALT	<i>RUBIN CONTROL</i> 130.800	<i>RUBIN APP</i> 123.375 /309.625	<i>RUBIN TWR/GND</i> 119.325 /232.850	<i>ATIS</i> 122.525
<i>TACAN FTM</i> Chan 37Y	<i>Trans Altitude: 4000'</i> <i>Trans Level: by ATC</i>	<i>Ad Elev</i> 183'	<i>LDA 8200'</i> <i>(2500 m)</i>	



DEPARTURE ROUTE DESCRIPTION

NOTE: TACAN azimuth required. After take-off start turn at D 4.0 FTM.

PLATO 2B	After take-off turn left on track 325° climbing to FL050 to intercept R-002 inbound PLATO .
SAVEN 2B	After take-off turn left climbing to FL050 inbound FTM to intercept R-335 FTM. At D 11.0 FTM turn left on track 294° direct to SAVEN .
DISEN 2B	After take-off turn right climbing to FL050 to intercept R-232 FTM inbound DISEN .
OLTIN 2B	After take-off turn left climbing to FL050 to intercept R-175 FTM inbound OLTIN .
RASOV 2B	After take-off turn left climbing to FL050 to intercept R-131 FTM inbound RASOV .
TOPAL 2B	After take-off turn left climbing to FL050 on track 002° to intercept R-036 FTM inbound TOPAL .